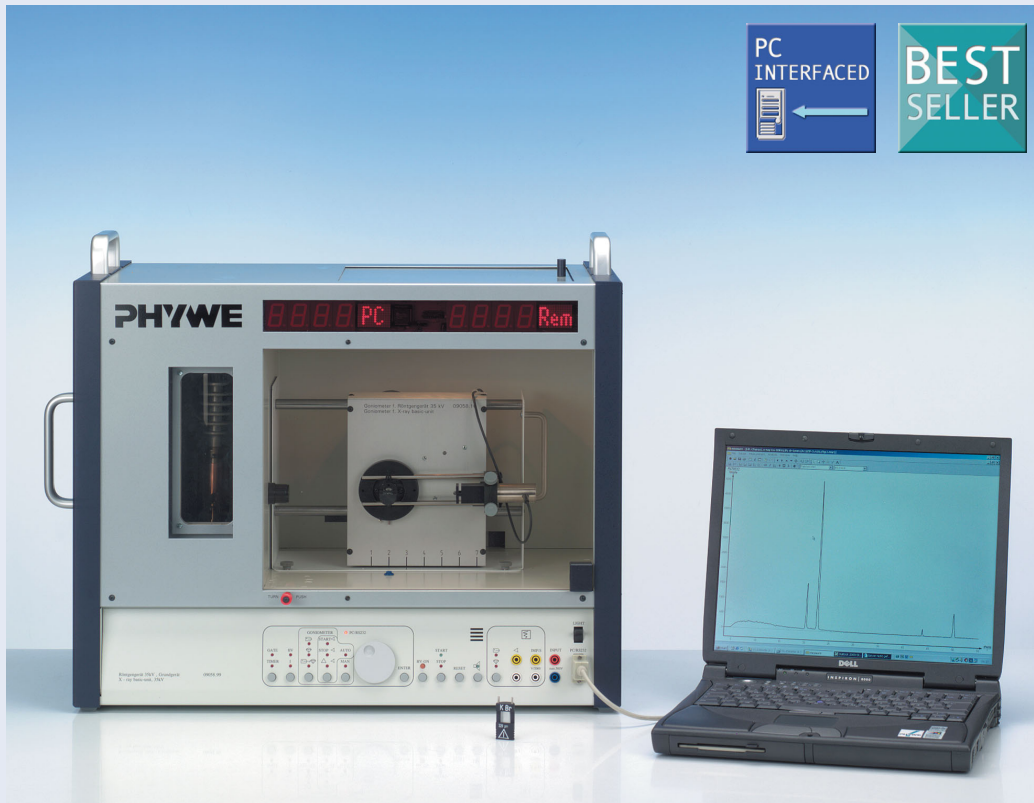


## Characteristic X-rays of copper 5.4.01-00



## What you can learn about ...

- Bremsstrahlung
- Characteristic radiation
- Energy levels
- Crystal structures
- Lattice constant
- Absorption
- Absorption edges
- Interference
- The Bragg equation
- Order of diffraction

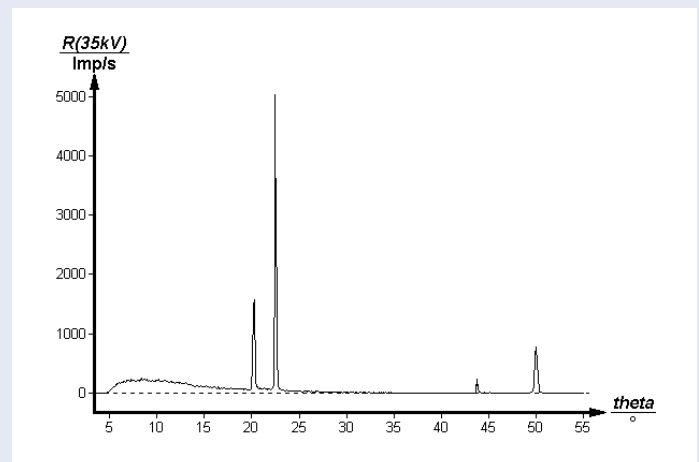
## Principle:

Spectra of X-rays from a copper anode are to be analyzed by means of different monocrystals and the results plotted graphically. The energies of the characteristic lines are then to be determined from the positions of the glancing angles for the various orders of diffraction.

## What you need:

X-ray basic unit, 35 kV	09058.99	1
Goniometer for X-ray Unit 35 kV	09058.10	1
Plug-in module with Cu-X-ray tube	09058.50	1
Counter tube type B, BNC cable, $l = 50$ cm	09005.00	1
Lithium fluorid crystal, mounted	09056.05	1
Potassium bromide crystal, mounted	09056.01	1
Software X-ray unit, 35 kV	14407.61	1
Data cable 2 x SUB-D, plug/socket, 9 pole	14602.00	1
PC, Windows® XP or higher		

**Complete Equipment Set, Manual on CD-ROM included**  
**Characteristic X-rays of copper P2540100**



X-ray intensity of copper as a function of the glancing angle; LiF (100) monocrystal as Bragg analyzer.

## Tasks:

1. The intensity of the X-rays emitted by the copper anode at maximum anode voltage and anode current is to be recorded as a function of the Bragg angle, using an LiF monocrystal as analyzer.
2. Step 1 is to be repeated using the KBr monocrystal as analyzer.
3. The energy values of the characteristic copper lines are to be calculated and compared with the energy differences of the copper energy terms.

### Related topics

X-ray tube, bremsstrahlung, characteristic radiation, energy levels, crystal structures, lattice constant, absorption, absorption edges, interference, the Bragg equation, order of interference.

### Principle

Spectra of X-rays from a copper anode are to be analyzed by means of different monocrystals and the results plotted graphically. The energies of the characteristic lines are then to be determined from the positions of the glancing angles for the various orders of interference.

### Equipment

X-ray basic unit, 35 kV	09058.99	1
Goniometer for X-ray unit, 35 kV	09058.10	1
Plug-in module with Cu X-ray tube	09058.50	1
Counter tube, type B	09005.00	1
Lithium fluoride crystal, mounted	09056.05	1
Potassium bromide crystal, mounted	09056.01	1
Recording equipment:		
XYt recorder	11416.97	1
Connecting cable, $l = 100$ cm, red	07363.01	2
Connecting cable, $l = 100$ cm, blue	07363.04	2
or		
Software X-ray unit, 35 kV	14407.61	1
RS232 data cable	14602.00	1
PC, Windows® 95 or higher		

### Tasks

1. The intensity of the X-rays emitted by the copper anode at maximum anode voltage and anode current is to be recorded as a function of the Bragg angle, using an LiF monocrystal as analyzer.
2. Step 1 is to be repeated using the KBr monocrystal as analyzer.

3. The energy values of the characteristic copper lines are to be calculated and compared with the energy differences of the copper energy terms.

### Set-up and procedure

Set up the experiment as shown in Fig. 1. Fix a diaphragm tube in the X-ray outlet tube (1 mm tube diameter using the LiF crystal and 2 mm tube diameter using the KBr crystal).

With the X-ray unit switched off, connect the goniometer and the counter tube to the appropriate sockets in the base plate of the experimenting area. Set the goniometer block with mounted analyzing crystal to the middle position and the counter tube to the right stop.

The following settings are recommended for the recording of the spectra:

- Auto and Coupling mode
- Gate time 2 s; Angle step width  $0.1^\circ$
- Scanning range  $3^\circ$ - $55^\circ$  using the LiF monocrystal, and  $3^\circ$ - $75^\circ$  using the KBr monocrystal
- Anode voltage  $U_A = 35$  kV; Anode current  $I_A = 1$  mA

When the spectra are to be recorded with an XY recorder, connect the Y axis to the analog output (Imp/s) of the X-ray basic unit and, correspondingly, the X input to the analog output for the angular position of the crystal (select the analog signal for the crystal angle with the selection button for this output).

When a PC is used for the recording of the spectra then follow this short instruction for easy operation:

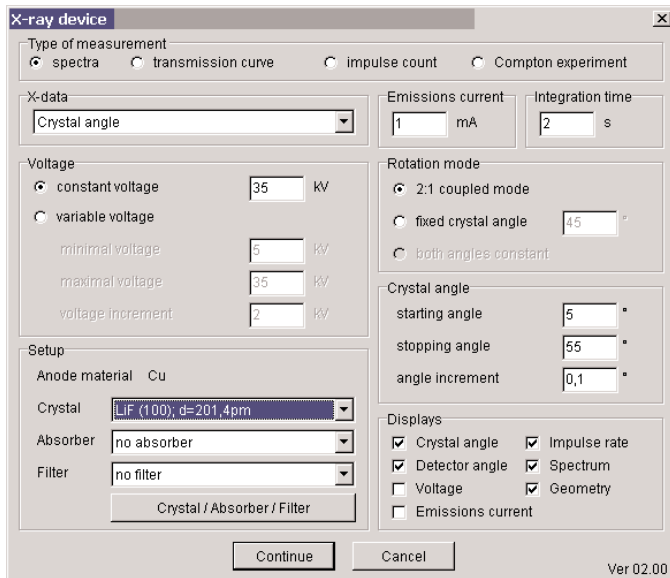
- 1) Switch on the x-ray unit
- 2) Open the door of the unit (check the position of the goniometer)
- 3) Connect the X-ray unit via RS232 cable to the PC port COM1, COM2 or USB port (for USB computer port use USB to RS232 Converter 14602.10)

Fig. 1: Experimental set-up for the analysis of X-rays



- 4) Start the "Measure" program and select "Gauge" -> "X-ray Device"
- 5) Select the parameters shown in Fig. 1a and press continue button (select the Crystal you are using: KBr or LiF)
- 6) Close the door of the X-ray device
- 7) Start the measurement

Fig.1a: Measuring parameters for the recording software



**Note**

Never expose the counter tube to primary radiation for a longer length of time.

**Theory and evaluation**

When electrons of high energy impinge on the metallic anode of an X-ray tube, X-rays with a continuous energy distribution (the so-called bremsstrahlung) are produced. X-ray lines whose energies are not dependent on the anode voltage and which are specific to the anode materials, the so-called characteristic X-ray lines, are superimposed on the continuum. They are produced as follows: An impact of an electron on an anode atom in the *K*-shell, for example, can ionize that atom. The resulting vacancy in the shell is then filled by an electron from a higher energy level. The energy released in this de-excitation process can then be transformed into an X-ray which is specific for the anode atom.

Fig. 2 shows the energy level scheme of a copper atom. Characteristic X-rays produced from either the *L* -> *K* or the *M* -> *K* transitions are called *K<sub>α</sub>*- and *K<sub>β</sub>*-lines respectively. *M<sub>1</sub>* -> *K* and *L<sub>1</sub>* -> *K* transitions do not take place due to quantum mechanical selection rules.

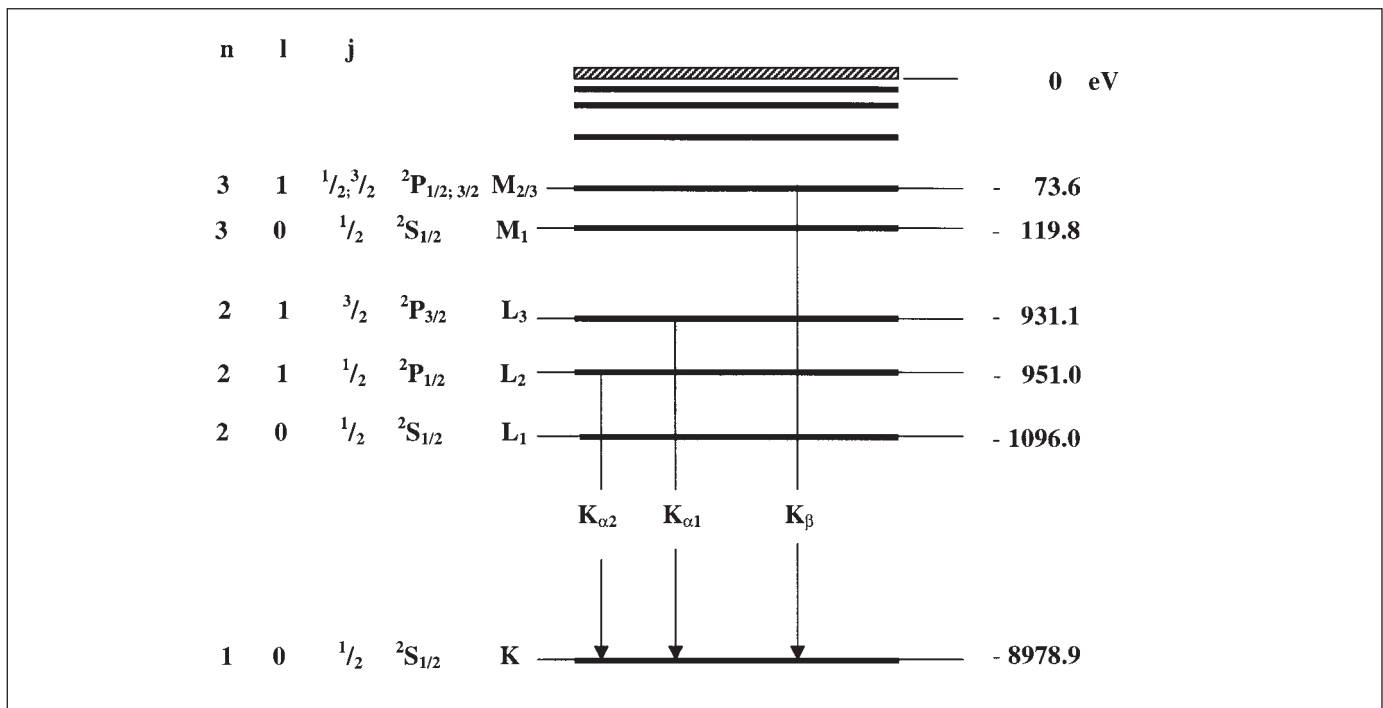
Accordingly, characteristic lines for Cu with the following energies are to be expected (Fig. 2):

$$E_{K\alpha^*} = E_K - 1/2 (E_{L2} + E_{L3}) = 8.038 \text{ keV} \quad (1)$$

$$E_{K\beta} = E_K - E_{M2.3} = 8.905 \text{ keV}$$

*K<sub>α</sub>\** is used as the mean value of the lines *K<sub>α1</sub>* and *K<sub>α2</sub>*. The analysis of polychromatic X-rays is made possible through the use of a monocrystal. When X-rays of wavelength  $\lambda$  impinge on a monocrystal under glancing angle  $\vartheta$ , constructive interference after scattering only occurs when the path difference  $\Delta$  of the partial waves reflected from the lattice planes is one or more wavelengths (Fig. 3).

Fig. 2: Energy levels of copper (Z = 29)



This situation is explained by the Bragg equation:

$$2d \sin \vartheta = n\lambda \quad (2)$$

( $d$  = the interplanar spacing;  $n = 1, 2, 3, \dots$ )

If  $d$  is assumed to be known, then the energy of the X-rays can be calculated from the glancing angle  $\vartheta$ , which is obtainable from the spectrum, and by using the following relationship:

$$E = h \cdot f = hc/\lambda \quad (3)$$

On combining (3) and (2) we obtain:

$$E = (n \cdot h \cdot c) / (2 \cdot d \cdot \sin\vartheta) \quad (4)$$

Planck's constant	$h$	$= 6.6256 \cdot 10^{-34} \text{ Js}$
Velocity of light	$c$	$= 2.9979 \cdot 10^8 \text{ m/s}$
Interplanar spacing LiF (200)	$d$	$= 2.014 \cdot 10^{-10} \text{ m}$
Interplanar spacing KBr (200)	$d$	$= 3.290 \cdot 10^{-10} \text{ m}$
and the equivalent		$1 \text{ eV} = 1.6021 \cdot 10^{-19} \text{ J}$

Fig. 4 shows that well-defined lines are superimposed on the bremsstrahlung continuum. The angles at which these lines are positioned remains unaltered on varying the anode voltage. This indicates that these lines are characteristic copper lines. The first pair of lines belongs to the first order of interference ( $n = 1$ ), whilst the second pair belongs to  $n = 2$ . When the LiF monocrystal is replaced by the KBr monocrystal for the analysis of the copper X-ray spectrum, Bragg scatterings are allowed up to an order of interference of 4 ( $n = 4$ ) (Fig. 5). The structures which are additional to those in Fig. 4 result from the higher lattice constant of the KBr monocrystal.

Fig. 3: Bragg scattering on the lattice planes

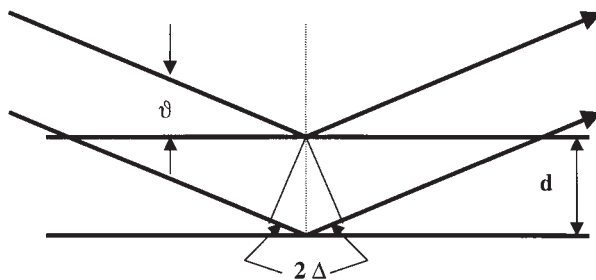
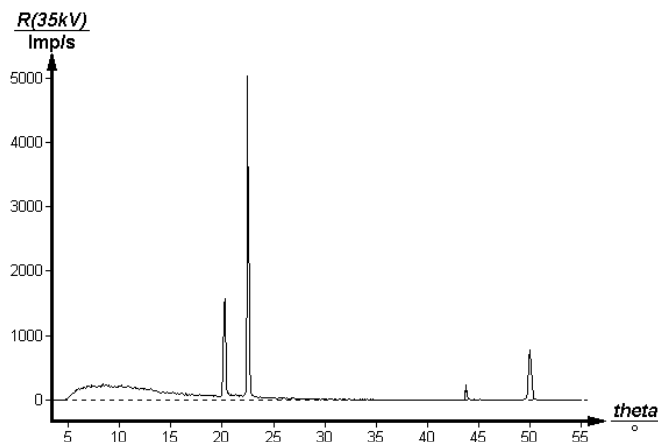


Fig. 4: X-ray intensity of copper as a function of the glancing angle; LiF (100) monocrystal as Bragg analyzer



The energy values of the characteristic copper X-ray lines are listed in the Table, as calculated using (4).

Table of results

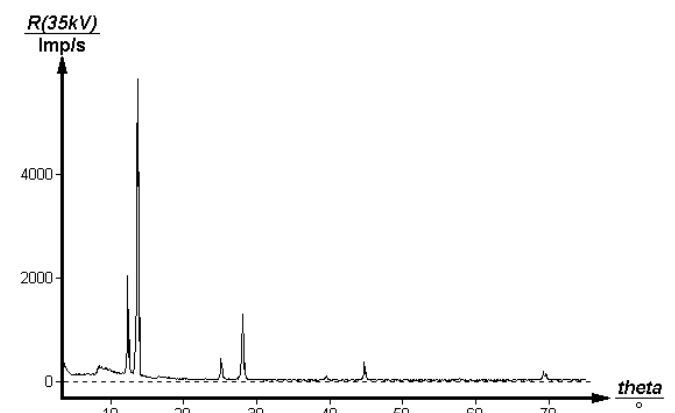
	$\vartheta/^\circ$	Line	$E_{\text{exp}}/\text{keV}$
LiF analyzer (Fig. 4)			
$n = 1$	22.6	$K_\alpha$	8.009
	20.4	$K_\beta$	8.830
$n = 2$	50.2	$K_\alpha$	8.012
	43.9	$K_\beta$	8.878
KBr analyzer (Fig. 5)			
$n = 1$	13.5	$K_\alpha$	8.059
	12.3	$K_\beta$	8.831
$n = 2$	28.0	$K_\alpha$	8.015
	25.1	$K_\beta$	8.870
$n = 3$	44.6	$K_\alpha$	8.038
	39.3	$K_\beta$	8.911
$n = 4$	69.4	$K_\alpha$	8.039
	57.6	$K_\beta$	8.893

Taking the energy values from the Table, the mean values of the energies of the characteristic lines are:  $E_{K_\alpha} = 8.028 \text{ keV}$  and  $E_{K_\beta} = 8.867 \text{ keV}$ . Both of these experimental values correspond to better than 1% with literature values (see (1) and Fig. 2).

A variation of the evaluation is possible by using the calculated characteristic copper X-ray lines from one spectrum in order to derive the corresponding lattice constant from the other spectrum.

The bremsstrahlung spectrum in Fig. 5 is subject to a noticeable drop in intensity in the direction of smaller angles at  $8.0^\circ$  and  $16.3^\circ$ . This drop coincides with the theoretically expected bromide  $K$ -absorption edge ( $E_K = 13.474 \text{ keV}$ ) in the 1<sup>st</sup> and 2<sup>nd</sup> order of interference. The  $K$ -absorption edges of potassium, lithium and fluorine cannot be observed, since the intensity of the bremsstrahlung spectrum is too low in these energy regions. (For  $K$ - and  $L$ -absorption edges, refer to experiment P2541200).

Fig. 5: X-ray intensity of copper as a function of the glancing angle; KBr (100) monocrystal as Bragg analyzer



**Note**

The atomic energy values were taken from the "Handbook of Chemistry and Physics", CRC Press Inc., Florida.